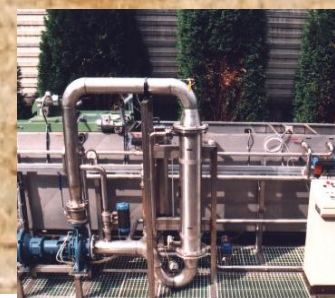
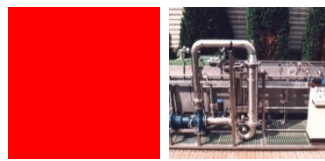


ULTRAFILTRATION UNIT
FOR TREATMENT
OF SPENT EMULSION
SEPAR C - S

WITH AN ATTENTIVE
EYE TO NATURE





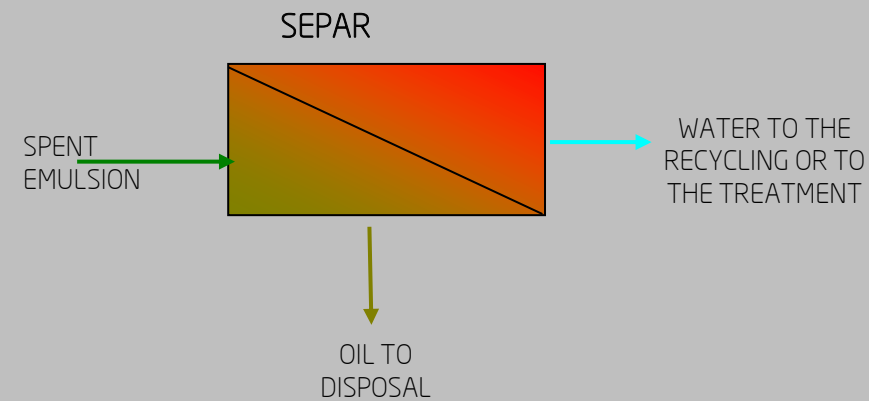
ULTRAFILTRATION UNIT FOR TREATMENT OF SPENT EMULSION SEPAR SERIES

APPLICATION

SEPARATION IN WATER AND IN OIL OF EMULSIONS COMING FROM:

- TUBE PLANTS
- ROLLING MILL
- DIE CASTING
- MECHANICAL WORKINGS
- THERMAL TREATMENTS

WORKING PRINCIPLES



MODELS CAPACITY

Model	l/h	Dimensions	Absorbed power (Kw/h)	Membrane surface (m ²)
SEPAR C 35	35	1800x1400x2500h	1,5	0,35
SEPAR C 70	70	1800x1400x2500h	1,5	0,70
SEPAR C 100	100	2200x1400x2500h	5,2	1,05
SEPAR C 200	200	2200x1400x2500h	5,2	2,10
SEPAR C 250	250	2200x1400x2500h	6,2	2,45
SEPAR C 500	500	3000x1800x2500h	8,80	4,9
SEPAR C 1000	1000	3200x2000x2600h	15,0	13,3

Model	l/h	Dimensions	Absorbed power (Kw/h)	Membrane surface (m ²)
SEPAR S 602.4	200	1600X1400X1600h	2,5	10
SEPAR S 604.4	400	1800x1400x1600h	2,5	20
SEPAR S 602.8	800	3000x1800x1800h	4,5	60
SEPAR S 604.8	1.600	3000x1800x1800h	6,0	120
SEPAR S 606.8	2.500	3200x2200x2000h	8,0	180
SEPAR S 612.8	5.000	4000x3000x2000h	10,0	360
SEPAR S 624.8	10.000	5000x3200x2200h	12,5	720

OPTIONAL

CATALYTIC OXIDATION - MOD. OXYTEC

IT IS A CATALYTIC OXIDATION OF THE ORGANIC PART OF THE PERMEATE THAT USES LIKE OXIDATION AGENT THE COMPRESSED AIR (OXYGEN EVENTUALLY) AND ITS PECULIARITY IS TO NOT PRODUCE ANY SLUDGE TO DISPOSE (ON THE CONTRARY OF WHAT HAPPENS WITH FENTON PROCESS).



CIRCUIT OF SEALS FLUXING

WHERE IT IS RECOMMENDED IN VIEW OF NATURE OF THE EMULSION.



COLLECTION AND RECOVERY OF OIL

IT ALLOWS TO RECOVER THE OIL IN PROPER STORAGE SITES

TURBIDIMETER

INSTRUMENT TO CHECK THE QUALITY OF THE PERMEATE AND THEREFORE THE WHOLE OPERATION OF THE SYSTEM



BACKPULSE

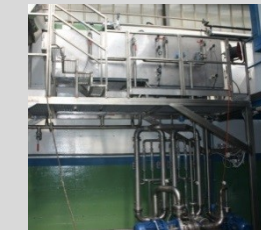
MEMBRANE BACKWASH

PROFIBUS

IT ALLOWS YOU TO INTERVENE OR TO EXTRACT FROM REMOTE THROUGH THE PLC

DIFFERENT DIMENSIONS

UPON SPECIFIC REQUEST, UNITS WITH DIFFERENT DIMENSIONS CAN BE STUDIED WHEN STANDARD DIMENSIONS ARE NOT COMPATIBLE WITH THE AVAILABLE SPACES.



DOUBLE PUMPS

ONE WORKS AND THE OTHER IS IN STAND BY, ASSURING THE CONTINUOUS WORKING OF THE PLANT WHEN MAINTENANCE TAKES PLACE



AUTOMATIC SLUDGE DRAIN

IT AVOIDS THE NEED TO PERIODICALLY REPLACE THE CONCENTRATION TANK

SLUDGE/OIL SEPARATOR BLADE MUD

IN THE CASE OF PROCESSES THAT PRODUCE A HIGH SLUDGE QUANTITY AND SUSPENDED PARTICULATES THAT CARRIES A LOT OF OIL, WE RECOMMEND INSTALLATION OF A OIL/SLUDGE SEPARATOR THAT RECYCLES CONTINUOUSLY THE DEGREASING BATH



THERMAL SPLITTING

IT ALLOWS TO REACH A CONCENTRATION OF RESIDUAL WATER LOWER IN THE DISCHARGED OIL PHASE..